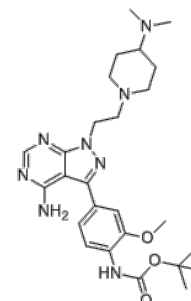


**Product Name** : eCF506  
**Cat. No.** : PC-61141  
**CAS No.** : 1914078-41-3  
**Molecular Formula** : C<sub>26</sub>H<sub>38</sub>N<sub>8</sub>O<sub>3</sub>  
**Molecular Weight** : 510.643  
**Target** : Src  
**Solubility** : 10 mM in DMSO



## Biological Activity

eCF506 is a highly potent, selective, orally available **Src family kinase** inhibitor with IC<sub>50</sub> of <0.5 nM, <0.5 nM and for Src, Yes and Fyn kinases respectively, >950-fold selectivity for Src over ABL.

eCF506 displays no significant activity against Kit, mTOR, PDGFR $\alpha$  and RET (IC<sub>50</sub>>10  $\mu$ M).

eCF506 suppresses SRC-associated neuromast migration in zebrafish embryos without inducing life-threatening heart defects, and inhibits SRC phosphorylation in tumor xenografts in mice.

## References

Fraser C, et al. *J Med Chem.* 2016 May 26;59(10):4697-710.

**Caution: Product has not been fully validated for medical applications. Lab Use Only!**

E-mail: tech@probechem.com